

Integrating Digital Workflows



Intraoral scanners are currently revolutionizing the way we practice dentistry. Not just with restorative capabilities, but the advancement of this digital technology has a large impact on the surgical aspect as well. As we enter the digital age of dentistry, we have to embrace this new workflow as it has many advantages for our patients and our practices. Incorporating a 3D intraoral scanner into our workflow can greatly increase the patient's experience in the treatment planning process as well as virtually execute with greater accuracy and proficiency.

Dr. Caudry's office recently purchased a Dentsply Sirona intraoral scanner, the Omnicam. This scanner will be available for all of Dr. Caudry's referring dentists for digital impression taking of their patient's implants. The best type of education is always a direct hands-on approach. Dr. Caudry will also teach her referring dentists how to design the appropriate abutment and crown by using the CAD/CAM software available through Atlantis®. With so many design options available it is difficult to decide what is appropriate for each individual patient. An understanding of the choices available through Atlantis® will help dentists better communicate with their lab by directing the design of both the abutment and the crown.



Patient Experience

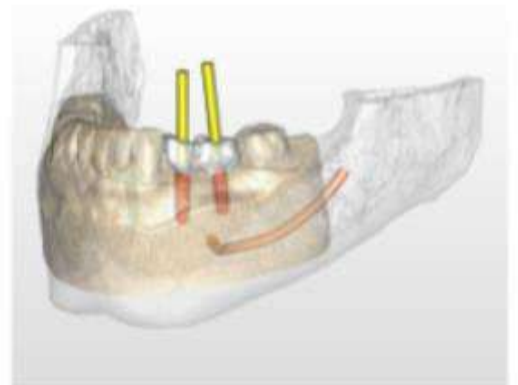
- Chairside communication and interaction with a digital scan vs. messy traditional impression (uncomfortable)
- Condenses the amount of appointments required for the patient
- Less time in the chair
- Comfort



Clinician Advantages

- Potential for greater accuracy with less remakes
- Less chairside time
- >250 scientific studies on clinical reliability

Surgical Guides and Guided Surgery using the Omnicam



Creating a surgical guide through Siplant® is easy with a CBCT scan (DICOM file) and a digital impression (.STL file) using the Omnicam. The two files are merged in Siplant® for Dr. Caudry and her referring dentist to plan a guided case. Once the implants are placed, the digital workflow continues with a digital scan of the implant, and the design of the abutment and crown by using the CAD/CAM software through Atlantis. Using this workflow can save time in the chair and translates into reduced cost and a positive experience for our patients.